



EU Japan Regional & Cluster Cooperation Helpdesk Webinar Series

“EU Japan regional cooperation good practice”

**Essen - Koriyama City-to-city Partnership: Towards a mutually beneficial partnership in energy, healthcare and next generation**

**Tuesday, March 7<sup>th</sup> 8:30-9:30 (CET) / 16:30-17:30 (JST)**

# KORIYAMA

**Yohei WATANABE**

Chief, Business Creation Division

City of Koriyama

# ESSEN

**Go THEISEN**

Project Director, International Business  
EWG – Essen Economic Development Agency



## 1. History of Cooperation

### 3. Selected in the IUC program funded by the EU in 2017

- Essen and Koriyama were selected as pairing cities in the International Urban Corporation (IUC) programme in 2017



Mayors of Essen and Koriyama signed the MoU in Dec. 2017

### 2. MoU between Essen & Koriyama in 2017

- City-to-city cooperation in the fields of renewable energy and medical device related industry to accelerate the revitalization in Koriyama

### 1. MoU between Fukushima Pref. & the State of NRW, Germany in 2014

- In the fields of renewable energy and medical device related industry to boost revitalization from the disasters in 2011

### 4. Conclusion of agreement on continued cooperation in 2019

- Education and development of next generations were newly-included as additional cooperation fields



Essen & Koriyama concluded the agreement on the continued cooperation in Sep. 2019

### 5. Join the IURC programme funded by EU in 2021

- Essen and Koriyama joined in the International Urban and Regional Cooperation (IURC) programme and work with Grenoble-Alpes Métropole and Toyota.



Mayor of Essen visited Koriyama in Sep. 2022



# Essen - Koriyama City-to-city Partnership: Towards a mutually beneficial partnership in energy, healthcare and next generation

- EU Japan Regional & Cluster Cooperation Helpdesk Webinar Series

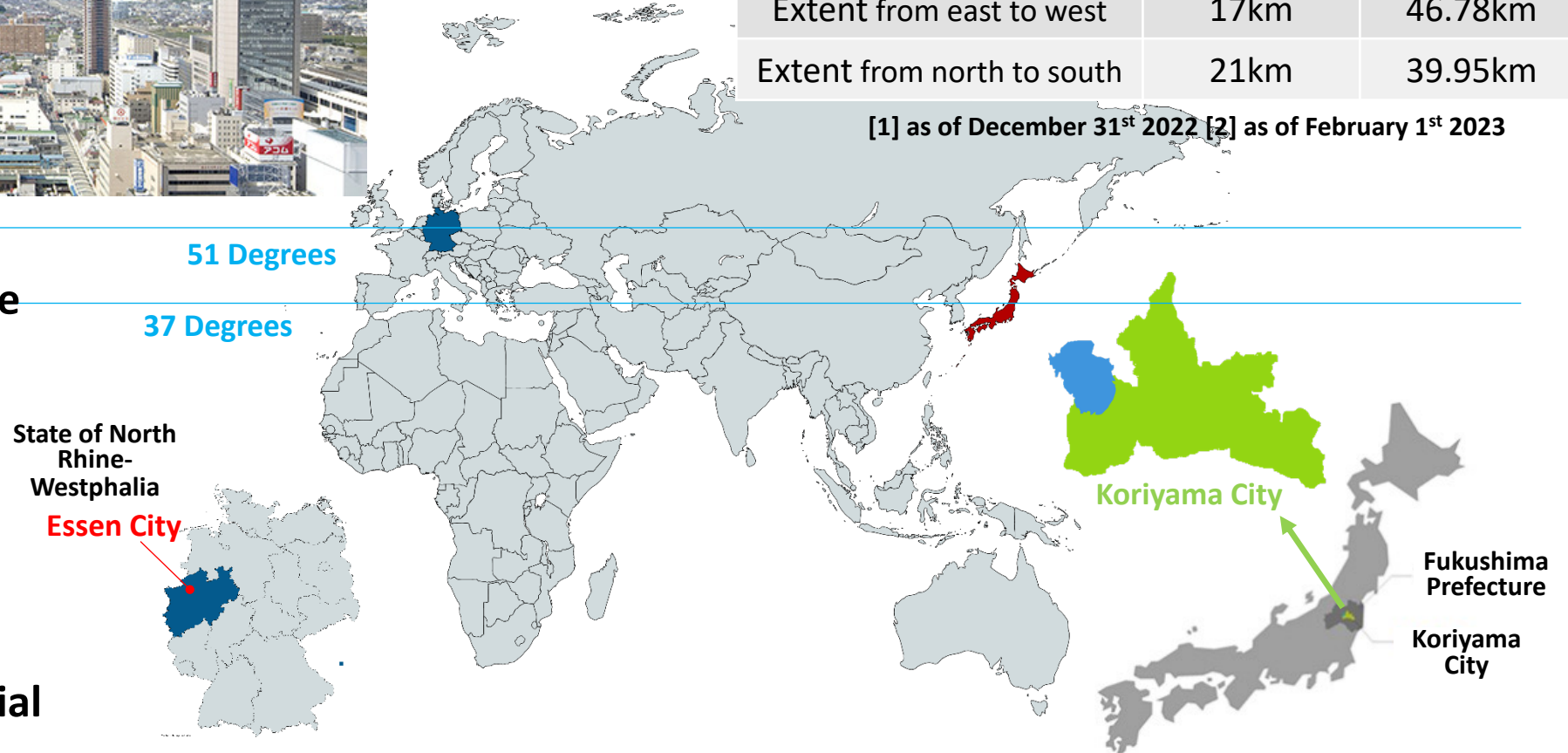
## 2. Geographical Features



	Essen <sup>[1]</sup>	Koriyama <sup>[2]</sup>
Population	593,489	323,350
Area	210.32km <sup>2</sup>	757.20km <sup>2</sup>
Extent from east to west	17km	46.78km
Extent from north to south	21km	39.95km

[1] as of December 31<sup>st</sup> 2022 [2] as of February 1<sup>st</sup> 2023

- The 2<sup>nd</sup> largest city in Fukushima Pref. with the population of approx. 323,000
- Great East Japan Earthquake in 2011 accelerated the energy transition of Fukushima Pref.
- Commercial and industrial capital of the prefecture





## 3. History of Koriyama City

- Transition from a city of power generation to city of renewable energy and medical devices



Oyasuba Burial Mound, built in the early Kofun Period (250 AD-538 AD)



Numagami Hydroelectric Power Station, laid the foundation of Koriyama's development

- 1.** Post Station at Oshu Kaido [Edo Period (1603-1868)]
- 2.** Modernization by Asaka Canal and Asaka Land Development (1882), paddy rice, silk and carp cultivation flourished
- 3.** New industry revolution, cotton and chemical industries flourished by hydro electric power generation, Hodogaya Chemical Co., LTD. and Nitto Boseki Co., LTD.
- 4.** People gathered, schools and banks established, railroaded to become the center of Fukushima Prefecture

**5.** Great East Japan Earthquake and Nuclear Accident at Fukushima Daiichi Nuclear Power Station in 2011



Building with its first floor collapsed due to the fierce earthquake



Fukushima Renewable Energy Institute, AIST (FREA) opened on April 1<sup>st</sup> 2014

**6.** Restoration from the disasters, promoting renewable energy and medical device development



Fukushima Medical Device Development Support Center (FMDDSC) opened November 7<sup>th</sup> 2017

**7.** Koriyama Coraborative Core Urban Area were formed with its surrounding 16 municipalities and selected as one of the SDGs Future Cities by the Japanese Government

**8.** 2024 marks the **100<sup>th</sup>** anniversary of **Koriyama City**



## 4. Stakeholders in Koriyama

Partnership  
Essen - Koriyama



Fukushima Renewable Energy Institute, AIST (FREIA)

### Renewable Energy

- Fukushima Renewable Energy Institute, AIST (FREIA)
- Energy Agency, Fukushima
- Japan External Trade Organization (JETRO)
- Fukushima Prefecture



Signing Ceremony for the continued cooperation in Koriyama in Sep. 2019



Fukushima Medical Device Development Support Centre (FMDDSC)

### Healthcare Industry

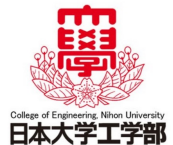
- Fukushima Medical Device Development Support Centre (FMDDSC)
- Southern Tohoku General Hospital



Digital Student Exchange of Asaka High School

### Education & Development of Next Generation

- Fukushima Prefectural Asaka High School
- College of Engineering, Nihon University





## 5. Fast Facts of Essen



**4th** largest city in **NRW**



**592,000** population



**11 mil.** inhabitants within 1 hour



**23,250** companies



**337,000** persons employed



**19.9%** highly qualified workforce



**€ 25.3 bil.** GDP



**4** universities and colleges



# Essen - Koriyama City-to-city Partnership: Towards a mutually beneficial partnership in energy, healthcare and next generation

- EU Japan Regional & Cluster Cooperation Helpdesk Webinar Series

## 6. Focus Industries



Focus Markets

Future Sector



Green Economy



Digital Health



Hydrogen



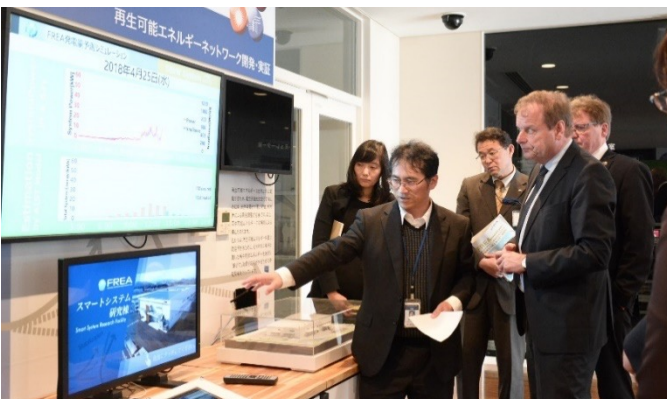
## 7. Renewable Energy



Koriyama sent a delegation consisted of its stakeholders to E-world energy & water 2022 in Jun 2022



Visit to Gas and Heat Institute Essen e.V. (GWI) in Nov 2019



Visit to Fukushima Renewable Energy Institute, AIST (FREA) in May 2018



Alternate participation in each industrial fair in Essen and Koriyama in 2020 and 2021 and after

- Mutual Participation in “E-world energy & water” in Essen and “Renewable Energy Industrial Fair (REIF) Fukushima” in Koriyama and mutual visits of research institutes





# Essen - Koriyama City-to-city Partnership: Towards a mutually beneficial partnership in energy, healthcare and next generation

- EU Japan Regional & Cluster Cooperation Helpdesk Webinar Series

## 8. Healthcare Industry



First meeting between Mayor of Koriyama and Prof. Sauerwein in Apr 2017



Meeting with Prof. Sauerwein and Prof. Hilken in Jun 2022



2021 Ceremony at the Consulate General in Düsseldorf in Aug 2021



Aug: Prof. Sauerwein was awarded the Order of the Rising Sun, Gold Rays with Neck Ribbon by the Japanese Government

2017

Apr: First meeting between Mayor of Koriyama and Prof. Sauerwein, Essen University Hospital

2019

Sep: Meeting with Southern Tohoku General Hospital and Essen University Hospital

2021

Nov: Joint Online Matching Event - Innovations in the age of coronavirus, Hundred Inc. gave a pitch

Jun: Meeting with Prof. Sauerwein and Prof. Hilken, Essen University Hospital



2018

Apr: Prof. Sauerwein, Essen University Hospital joined the delegation of Essen to Koriyama

2020

2022

Meeting between medical institutions in Essen and Koriyama in Sep. 2019



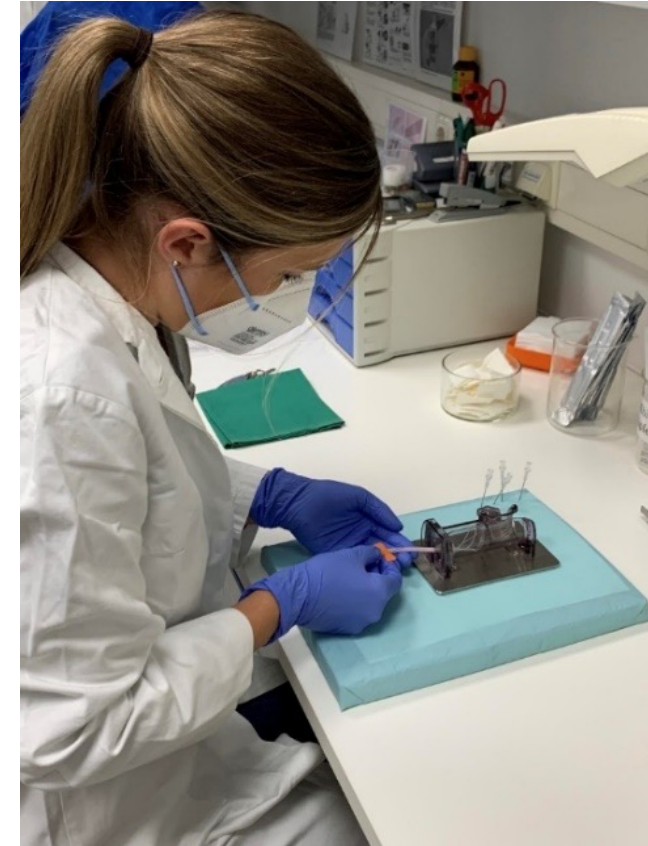
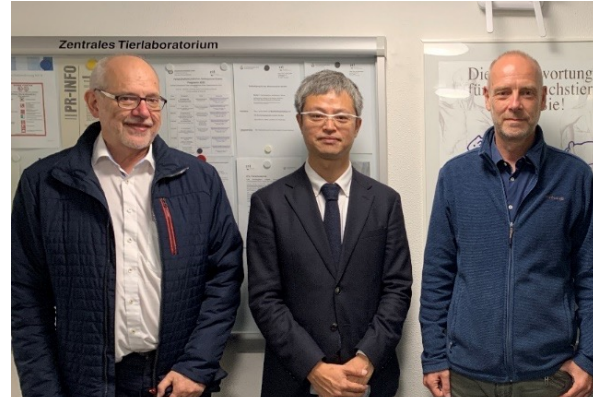
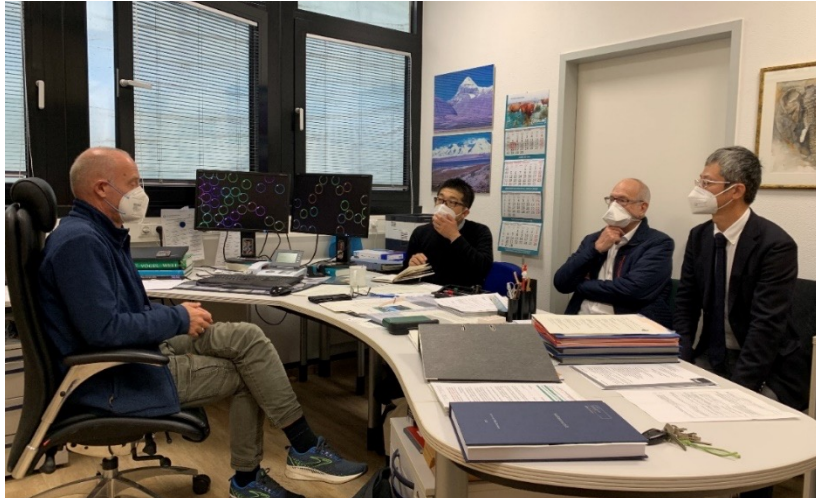
Hundred Inc. gave an online pitch to medical institutions in Essen in Nov 2020



# Essen - Koriyama City-to-city Partnership: Towards a mutually beneficial partnership in energy, healthcare and next generation

- EU Japan Regional & Cluster Cooperation Helpdesk Webinar Series

## 9. Healthcare Industry



Products of Hundred Inc. have been used for a training course at Essen University Hospital since Sep 2022



**Hundred Inc. visited Essen University Hospital for the first time and gained feedbacks from Prof. Sauerwein, Prof. Hilken and Prof. Lückerath**



## 10. Music Projects

### 'Symbol of cross-national solidarity' Project - Sharing a sense of unity against COVID-19

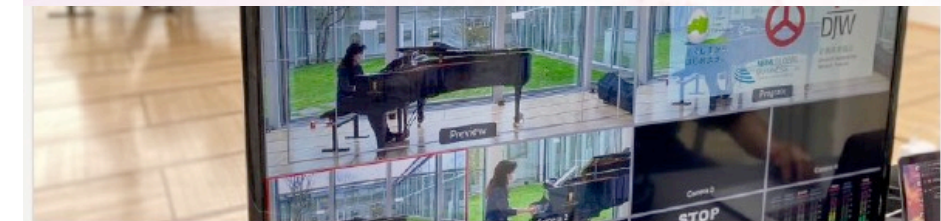
Recorded  
video message  
from Mayor of  
Koriyama  
during the live-  
streaming  
concert

„FRÜHLING IN FUKUSHIMA“  
GEDENKKONZERT ZUM 10. JAHRESTAG  
福島の春：東日本大震災10年  
復興支援メモリアルコンサート

13.03.2021 / 2021年3月13日 LIVE-STREAM  
12:00 - 14:00 DEUTSCHE ZEIT  
20:00 - 22:00 日本時間

Veranstalter 主催者 Partner 共催

ESSEN Museum Folkwang Ministerium für Wirtschaft, Innovation, Digitalisierung und Energie des Landes Nordrhein-Westfalen Consulate-General of Japan in Düsseldorf A&S MUSICA 日独交流160周年 日独友好協会 Deutschland-Japan



- Das ist Essen
- Stadtporträt
- Stadtgeschichte
- Grünes Essen
- Essen
- International
- Europe Direct
- Globale Verantwortung
- Partnerstädte
- Projekte
- Stadtteile
- Essen in Zahlen

### Städtepartnerschaften in Zeiten des Coronavirus

Gerade in Zeiten des Corona-  
einhergehenden Kontaktbeschränkung  
wichtiger, die internationale  
stärken und zu pflegen. Die  
ihren sieben Partnerstädten  
Kontakt und tauscht sich für  
Situation sowie die getroffenen  
einzelnen Städten aus. Was  
um die Auswirkungen der Pandemie  
niemand vorbereitet war. Auf  
Thomas Kufner ist in vorletzter



Children in Koriyama joined 'Symbol of cross-national solidarity' project to share a sense of unity, empathy and encouragement against COVID-19 with Essen in May 2020



# Essen - Koriyama City-to-city Partnership: Towards a mutually beneficial partnership in energy, healthcare and next generation

- EU Japan Regional & Cluster Cooperation Helpdesk Webinar Series

## 11. Next Generation 2022

2020

Feb: Meeting with the Green Club in Essen

Dec: Students' visit to Essen was called off, started online exchanges

2021

Jan: Students' visit to the German Embassy

Feb: Welcomed German Ambassador

Sep: Welcomed Lord Mayor of Essen

Dec: Students' visit from Koriyama to Essen

2021

Mar: Presentation Day

Nov: Online session with Dr. Takada, UNDESA at COP 26 in Glasgow

2023

Sep: Online exchanges (planned)

2024

Jan: Students' visit from Koriyama to Essen (planned)

2025

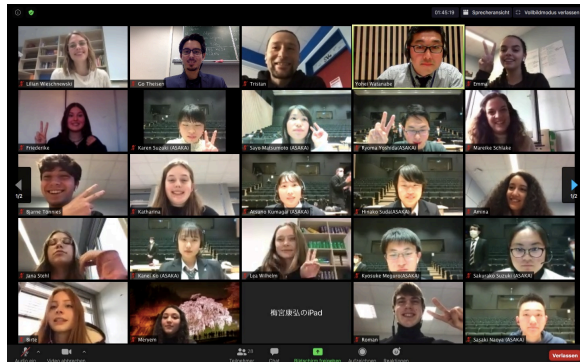
Jan: Students' visit from Essen to Koriyama (planned)



Online session with Dr. Takada, UNDESA at COP 26 in Glasgow in Nov 2021



First meeting with the Green Club in Feb 2020



First online exchange in Dec 2020



Comments from Ms. Welter, German Embassy in Mar 2021



Visit of Lord Mayor of Essen in Sep 2022 12



# Essen - Koriyama City-to-city Partnership: Towards a mutually beneficial partnership in energy, healthcare and next generation

- EU Japan Regional & Cluster Cooperation Helpdesk Webinar Series

## 12. Next Generation



Bewerbungsfrist für 2023 abgelaufen  
Bewirb Dich im Sommer 2023 für 2024



Alfried Krupp von Bohlen und Halbach-Stiftung



First students' visit from Koriyama to Essen in Dec 2022



First internship from Essen to Koriyama organized by Alfried Krupp Foundation in Mar 2023



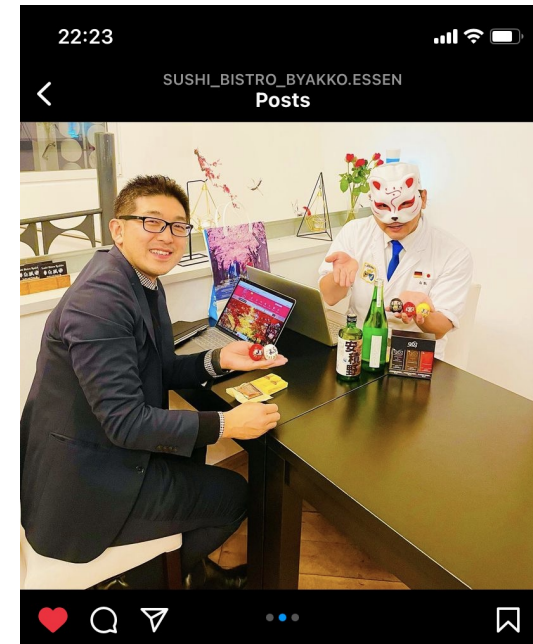
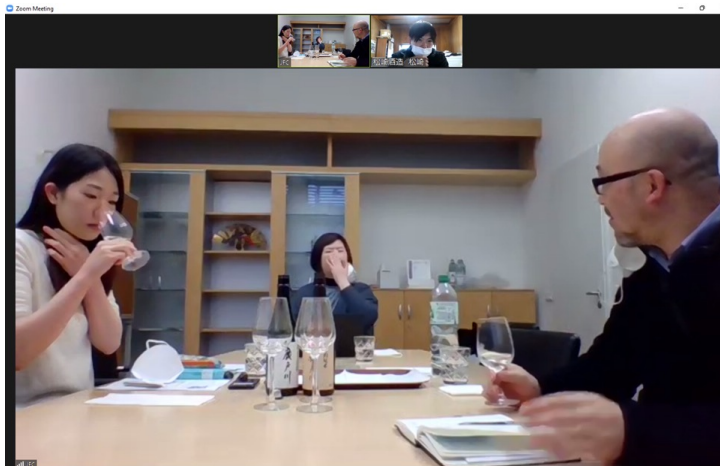
## 13. Sake Projects



**JETRO**  
Japan External Trade Organization



松崎酒造  
MATSUZAKI SYUZO



'Japanese Sake Matching Project', an online matching between local Sake breweries and wholesalers in Germany, was launched with the support of JETRO.



EU Japan Regional & Cluster Cooperation Helpdesk Webinar Series

“EU Japan regional cooperation good practice”

**Essen - Koriyama City-to-city Partnership: Towards a mutually beneficial partnership in energy, healthcare and next generation**

**Tuesday, March 7<sup>th</sup> 8:30-9:30 (CET) / 16:30-17:30 (JST)**

**Thank you for your attention!**

# KORIYAMA

**Yohei WATANABE**

Chief, Business Creation Division

City of Koriyama

# ESSEN

**Go THEISEN**

Project Director, International Business  
EWG – Essen Economic Development Agency